

Kristina

Kristian



## **7 PRESENTATION**

## **8 CONTACT**

## **10 ART WORKS: “META” SERIES**

12 Persephone

16 Leto

20 Venus

24 Rossi

26 Méduse

30 Épopée

34 Métamorphose

## **40 ART WORKS: “AWE” SERIES**

42 Mallacoota

46 ʘuɹɔɔɹɹ

50 Spomenik

54 Voluptés Imaginaires

58 Landscape

## **64 ART WOKRS: “FLOREBO QUOCUMQUE FERAR” SERIES**

66 Orion

68 Recollection II

70 Cepheus

## **74 COMMISSIONED ART WORKS**

76 Hermès store

80 Silversquare Bailli

88 Et Lux In Tenebris Lucet

90 Dreamscape

94 Shakkei

98 DIVA Museum

102 Bouchéry restaurant

106 Belfius Art Gallery

110 Maasmechelen Village

WWW.KRJSTSTUDIO.COM

KRJST Studio has a triangular structure composed by Justine de Moriamé, Erika Schillebeeckx, and their Art. The whole forms a magnetic field of experimentation which attracts and digests its surroundings. Four hands, two souls, and four eyes are tuned together to invoke a collective memory, to alter it, and to pass it on. The weavings serve as witnesses of their era, survivors of a narrative, oscillating between past and future, embodying our roots, expanding the present. They can be apprehended with the alchemical unit of measurement: the time required to...

KRJST puts colours to express what words fail to describe; they paint with weaving threads imaginary landscapes of a poetic, calm, and yet tormented realm, the chaos where emotions are born. These weavings are the result of research anchored in our time and of a constant development around drawing, painting, 3D drawing, as well as chemical research on conductivity.

The weaved pieces stem from a research work that is rooted in our time, mixing influences of classical and modern art with traditional techniques, which are then adapted and deformed with new technology in order to reinvent a format, tapestry, and push forward its visual and formal boundaries.

KRJST aims at putting the concept of contemplation back into the contemporary art scene, offering an emotion more than a sensation. Textile art is both familiar and complex. The observer must be able to approach it and closely look into details, then to take some distance to apprehend the big picture; they can touch it and feel it, even with their eyes shut.

By giving itself time for creation, KRJST takes an intimate awareness of time both as the place of change and a place of permanence and as a place of reconciliation between traditional and ritual technique and experimental and modern technique, making dialogue between laborious work of weaving and the moment of the gesture. The binary relationship between the jacquard and the processor is already evocative in itself. Such an oscillation between the past and the future between craftsmanship and technology, reflecting the importance of keeping our roots and yet living with the times.

According to the alchemical principles we can only get to the end of the road if we do not know what we are looking for. The unconscious arises in the creative process and allows the artist to present himself as the guardian of the limits of appearance and to show his/the in-visible.

PAST EXHIBITIONS — Solo show “Super” curated by Philippe David (Zurich), Duo Show KRJST Studio & Sophia Taillet at the Lou Carter Gallery for the Design Week (Paris), Group show Hell’s Kitchen at Zaventem Ateliers (Brussels), Art Paris at Grand Palais with ART SABLON Gallery (Paris), Duo Show “Royaumes” at Gallery DYS (Brussels), COLLECTIBLE Art Fair with Zaventem Ateliers at Espace Vanderborght (Brussels), Group Show “Marbré” curated by kolkhoze at La maison Dentsu (Paris), Fair for saatchi Gallery with Art Sablon (London), “Textile Reveal” at Unix Gallery curated by lidewij edelkoort (New York), #itinérance 12 “Conversation” with Pierre Bonnefille (Paris), Solo show at Adornes Domain (Bruges), Group Show at Museo de Arquitectura y Diseño de la SCA (MARQ) (Buenos Aires), Thierry Boutemy’s Pop Store (London), Saatchi Gallery (London), Belfius Art Gallery (Brussels), National Pop Up Store (Hong Kong), Group Show at Desmet Gallery (Brussels), Beirut Art Fair (Lebanon), YIA Art Fair (Maastricht), Exhibition “Hors Piste” at La Vallée during Art Brussels Art Fair (Amsterdam), Exhibition “De Belgen” at Bozar (Brussels), YIA Art Fair (Paris), Solo Show at Art Sablon Gallery (Brussels), Art Elysées (Paris), Art Truc Troc & Design at BOZAR (Brussels), MIART (Milan), Solo Show at Atelier Relief (Brussels), Presentation of KRJST at Silencio Club (Paris), Solo Show at Daniel Crouch Rare Books as part of Master Piece London (London), Group Show CANTO XIX at The American Irish Historical Society (New-York), COLLECTIBLE Art Fair with Atelier Jespers at Espace Vanderborght (Brussels), DIVA.Antwerp home of Diamonds (Antwerp), Exhibition MELANCHOLIA at La Villa Empain - Fondation Boghossian (Brussels), Solo Show at Philippe David Gallery (Zurich)



ERIK SCHILLEBEECKX  
0032 474240927  
JUSTINE DE MORIAMÉ  
0032 499427549  
ZAVENTEM ATELIER  
FABRIEKSSTRAAT 75-79  
1930 ZAVENTEM  
BONJOUR@KRJS.T.COM



« Nous voulons être libre d'inquiétude. »

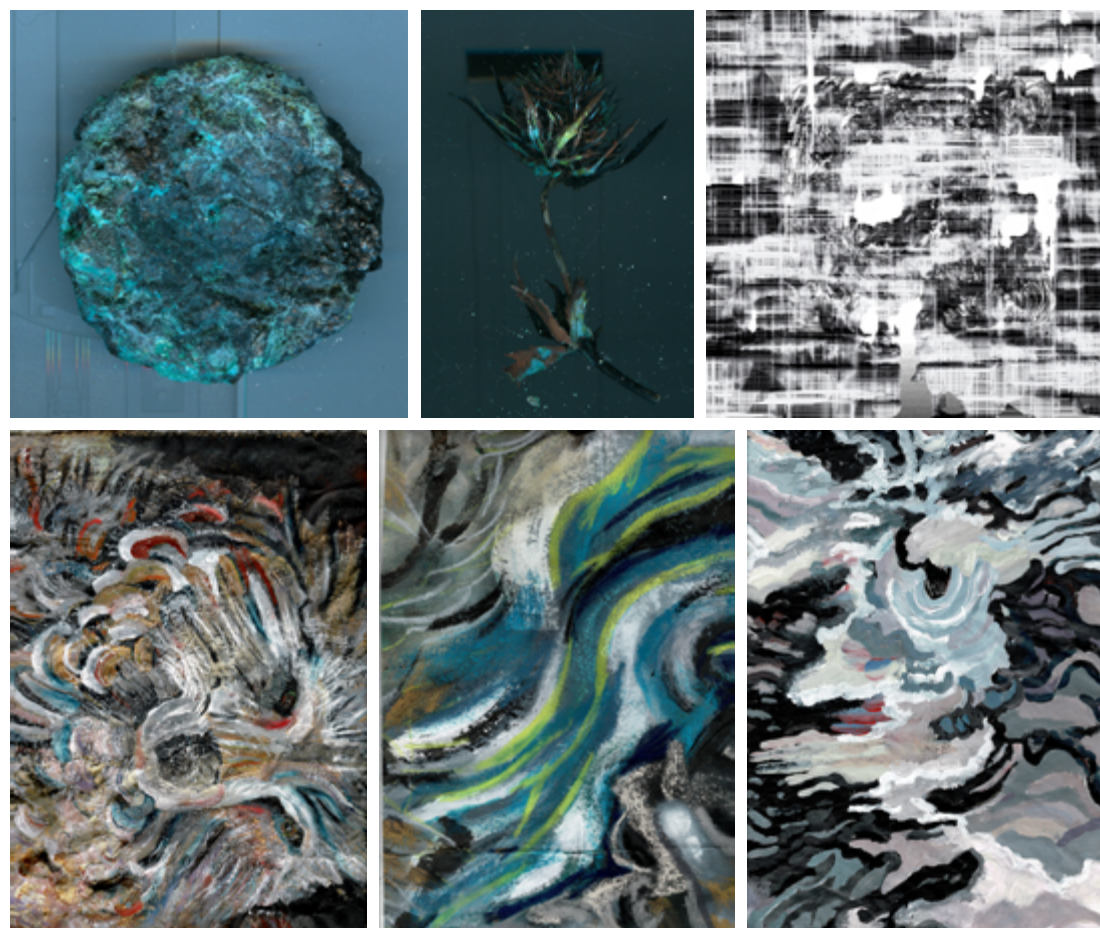
# ART WORKS: “META” SERIES

By searching, sorting, archiving; colors, shapes and materials become a puzzle of data from which we seek combinations that comforts: “organization, harmony, chaos and structures”; to finally obtain a poetic moment — a moment of intimacy — a work with space, in which the public finds the warmth of what is reassuring to him and the anxiety of what he discovers.

These mystical depths brought into correlation with our individual questions reposition us as part of a collective belonging.

It allow us to tell our truth in a structure of fiction, soliciting memories, memories, fictions, passing, myths, transmissions. This time spent contemplating memories and fictions in different forms of plastic work is an invitation to take the time and immerse oneself in the memories of tomorrow.





**"PERSEPHONE"** 2021 3 editions  
with unique embroidery + artist proof  
Dimensions **195x270 cm**  
Composition **acryl coton Lurex mohair**  
**monofilament nylon paper recycled polyester**

Photography **Sébastien Delahaye**  
Zaventem **Zaventem Ateliers**









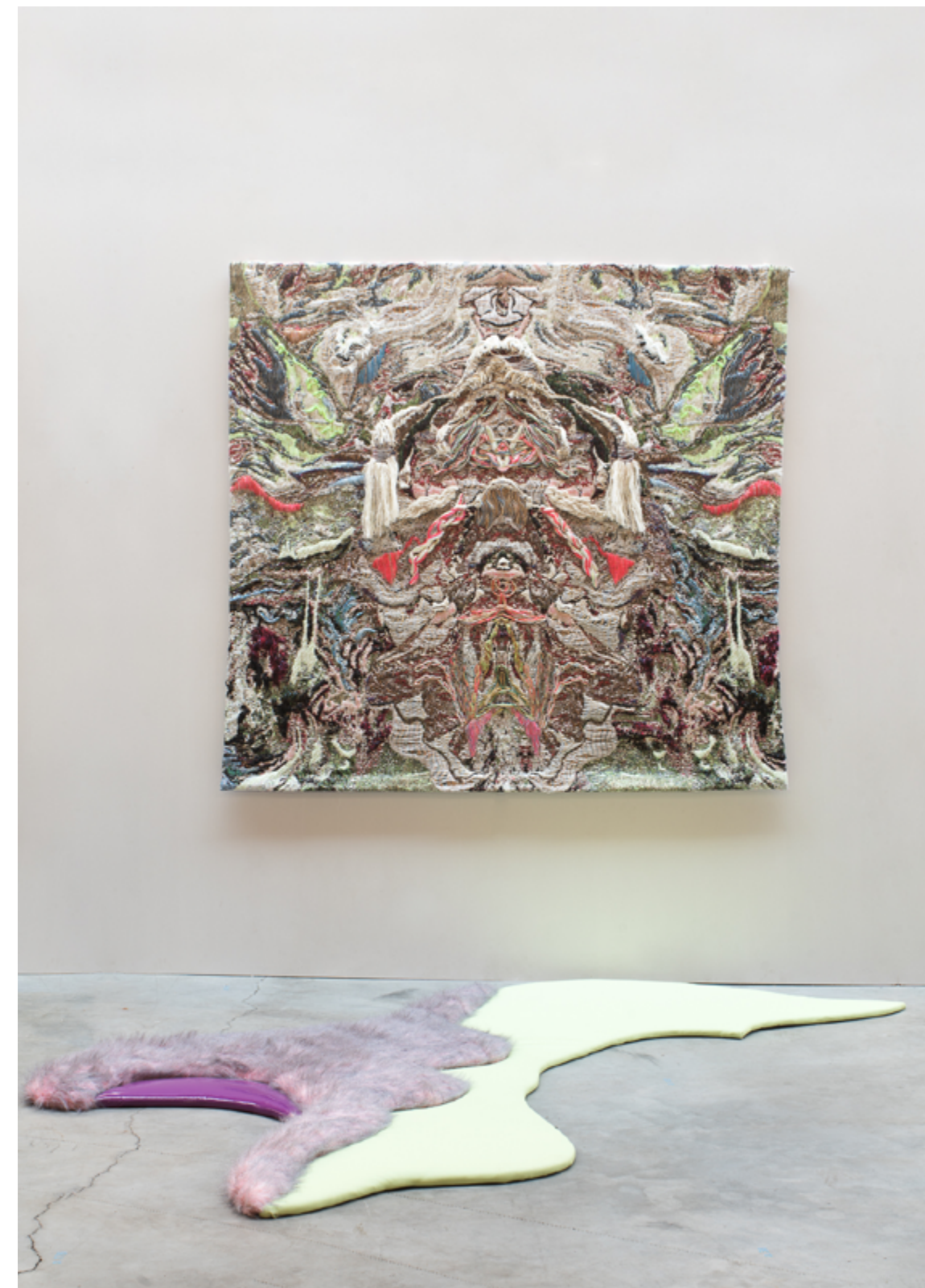
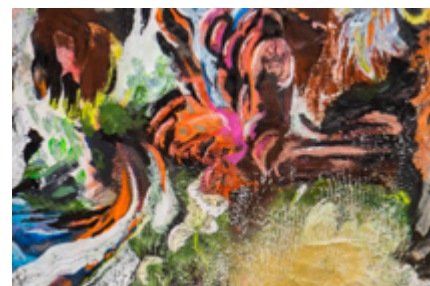
**"LETO"** 2021 3 editions with  
unique embroidery + artist proof  
Dimensions **230x230 cm**  
Composition **alpaca coton mohair**  
**monofilament polymer recycled pet**

Photography **Sébastien Delahaye**  
Zaventem **Zaventem Ateliers**









**"VENUS"** 2021 3 editions with unique embroidery + artist proof Dimensions **200x200 cm** Composition **alpaca coton Elyrex Lurex mohair monofilament polymer recycled pet reflective yarn**

Photography **Sébastien Delahaye**  
Zaventem **Zaventem Ateliers**





"VENUS" Original drawing





**"ROSSI"** 2021 3 editions with unique embroidery + artist proof Dimensions **100x160 cm** Composition **alpaca coton Elyrex Lurex mohair monofilament polymer recycled pet reflective yarn**

Photography **Sébastien Delahaye**  
Zaventem **Zaventem Ateliers**





**"BENCH"** by RSLT  
Dimensions **40,5H 70W 200Dcm**  
Composition **custom made rope by KRJST Studio steel profile hot drawn steel bar**

**"MÉDUSE"** 2020 3 editions  
Dimensions **200x235 cm**  
Composition **cashwool coton mohair nylon paper raffia wool**

Photography **Sébastien Delahaye**  
Zaventem **Zaventem Ateliers**





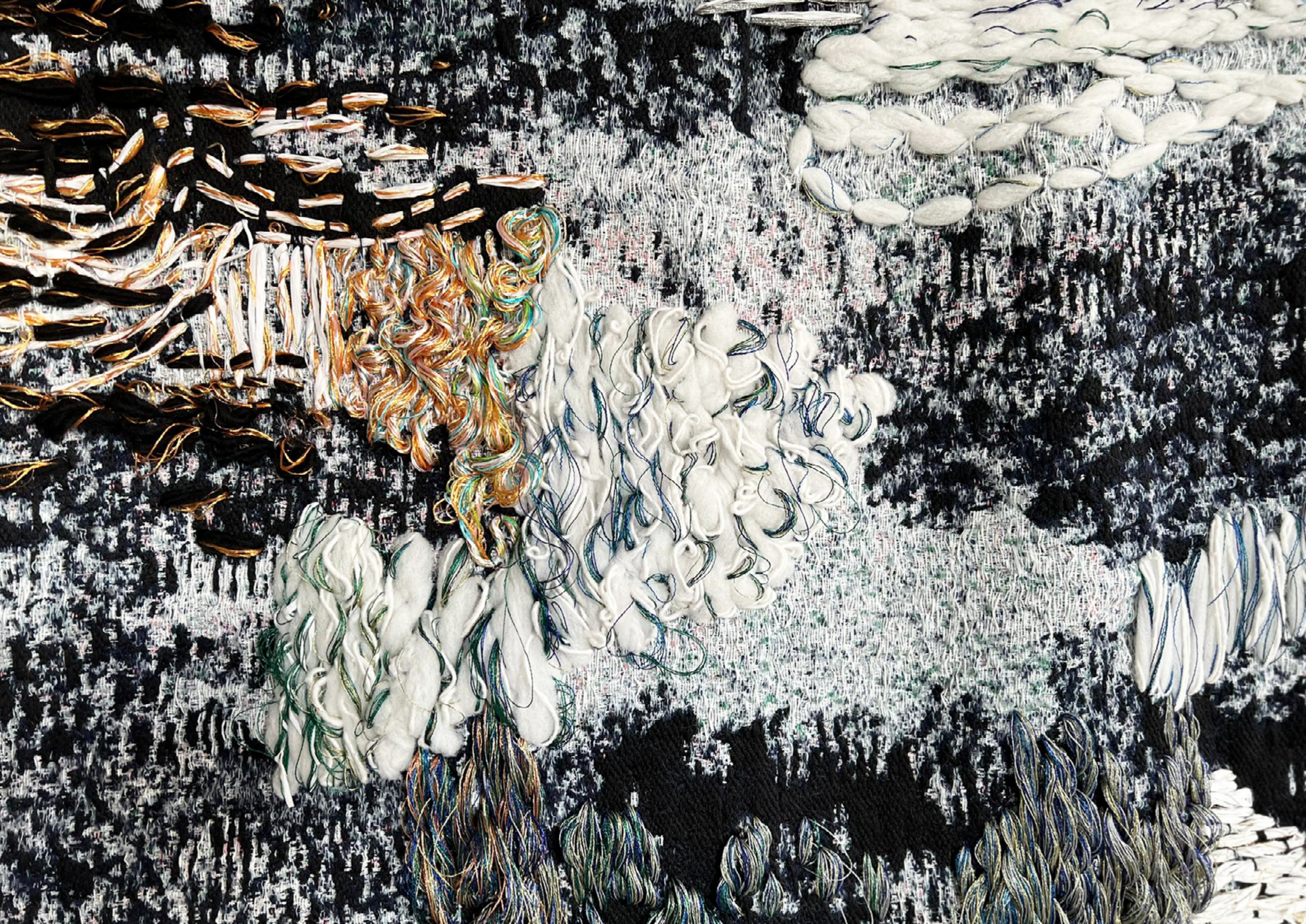




**"ÉPOPÉE"** 2020 3 editions 2 artist proofs  
 Dimensions **185x160 cm** Composition **coton**  
**mohair paper polyester polymer raffia**

Table **Maison Armand Jonckers**  
 Zaventem **Zaventem Ateliers**





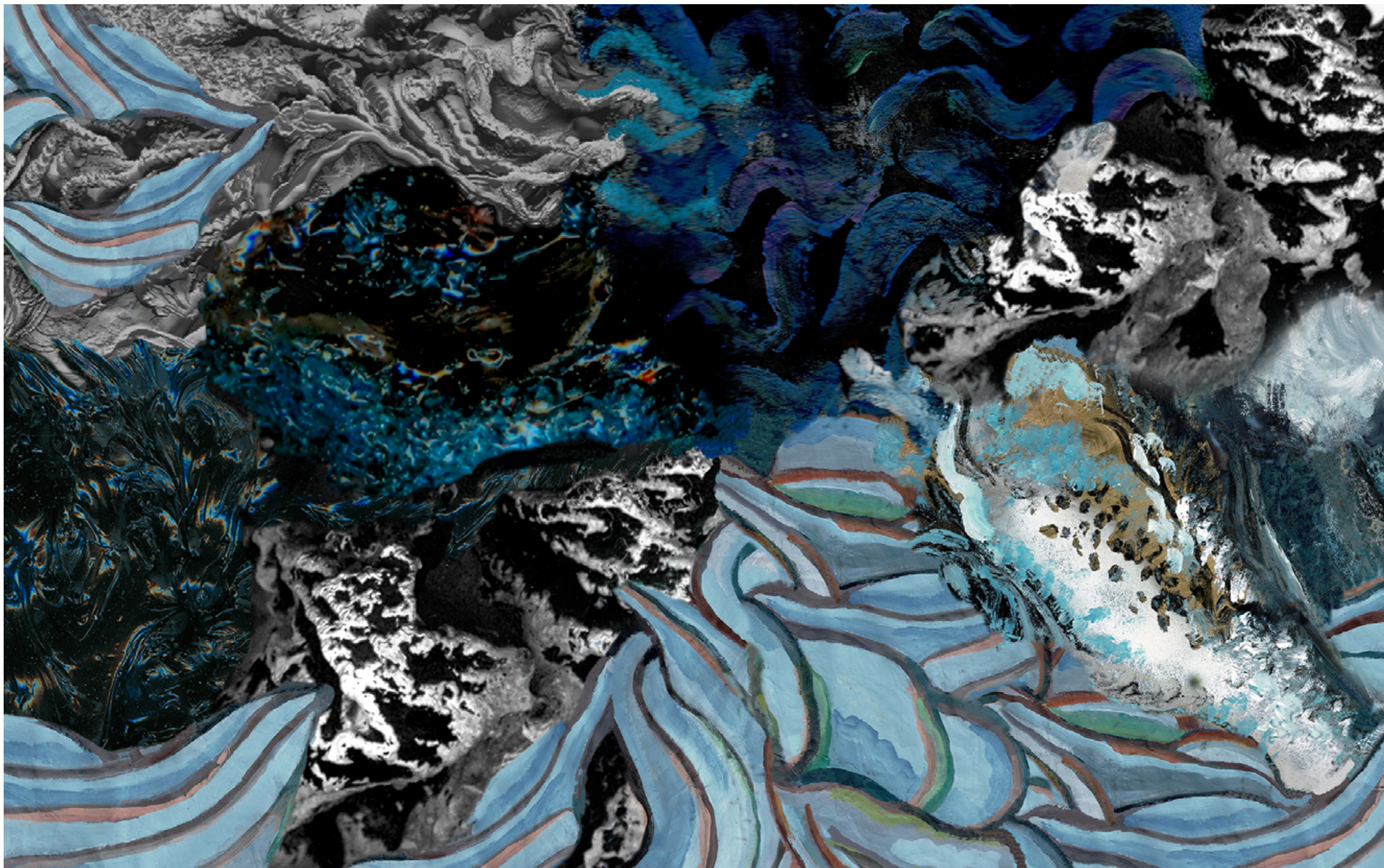




**"MÉTAMORPHOSE"** 2020 3 editions  
 Dimensions **160x250 cm**  
 Composition **acrylic cashwool**  
**coton Elirex mohair paper**  
**polyester wool**

Table **Maison Armand Jonckers**  
 Photography **Sébastien Delahaye**  
 Zaventem **Zaventem Ateliers**





"METAMORPHOSE" Original drawing







# ART WORKS: “AWE” SERIES

AWE seeks the boundaries where anxiety and bliss are found; it explores the contemporary definition of femininity in a society that is as fascinating as it is frightening.

AWE reflects an emotional mapping in response to the world we live in.

How to deal with paradoxical feelings, reflecting both the paralysis in the face of urgency and the positive sensation of imminent change? How to deal with the political, economic and environmental cataclysms of our time?

These questions are translated into tormented visions of hanging gardens and incandescent vegetations. Paths through which apocalypse, wars, injustice, climate are in balance with beauty, journey, force of nature, tradition and the sacred.





**"MALACOOTTA"** 2020 3 editions 2 artist proofs  
 Dimensions **185 x 160 cm** Composition **coton**  
**mohair paper polyester polymer raffia**

Piece of textile **Touche—Touche**  
 Photography **Sébastien Delahaye**  
 Zaventem **Zaventem Ateliers**





"MALLACOOTA" Original drawing



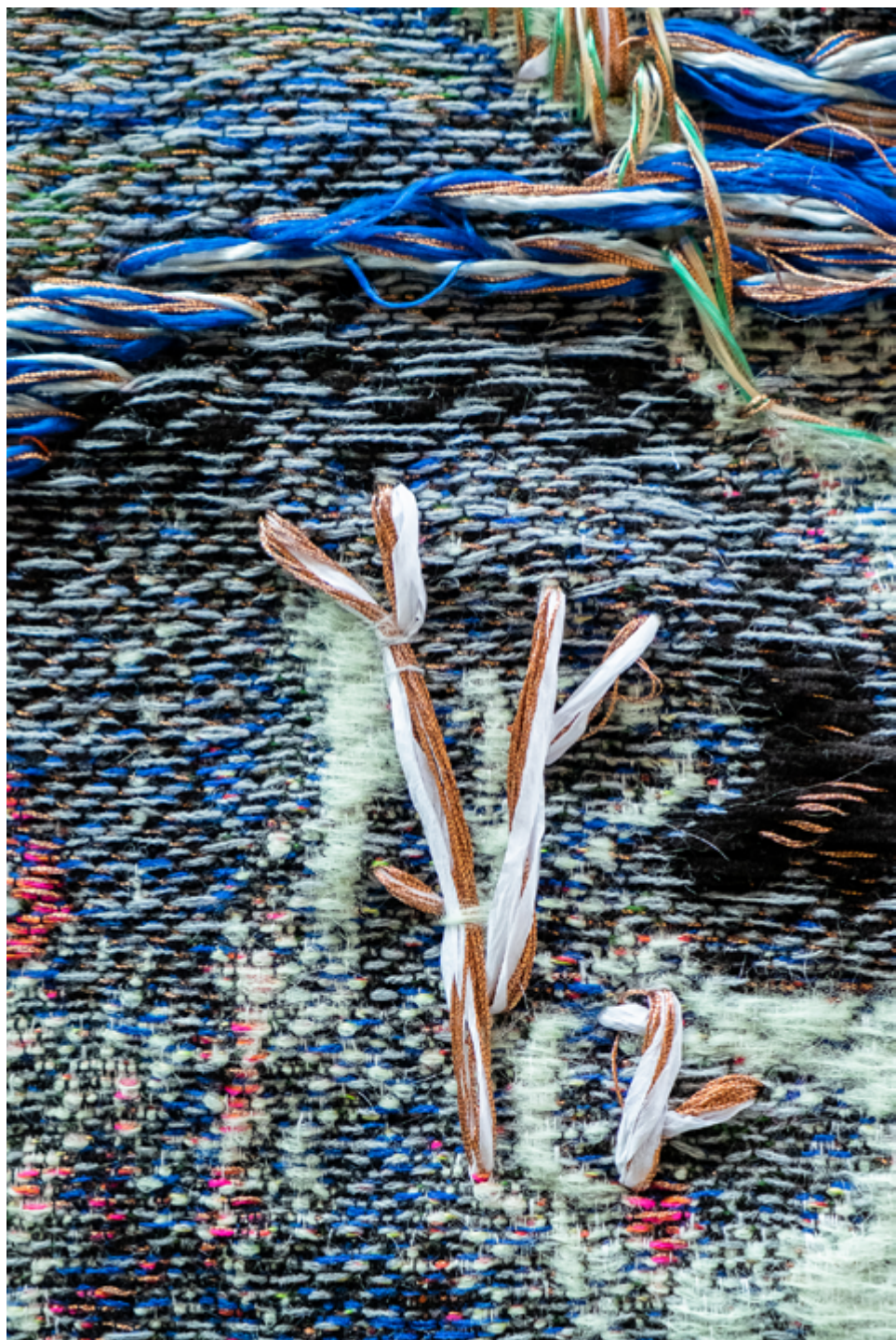




"L'INCORNE" 2020 3 editions  
embroidered tapestry  
Dimensions **160x160 cm**  
Composition **acrylic coton merino wool**  
**mohair polyester polymer veluto**

Photography **Sébastien Delahaye**  
Zaventem **Zaventem Ateliers**









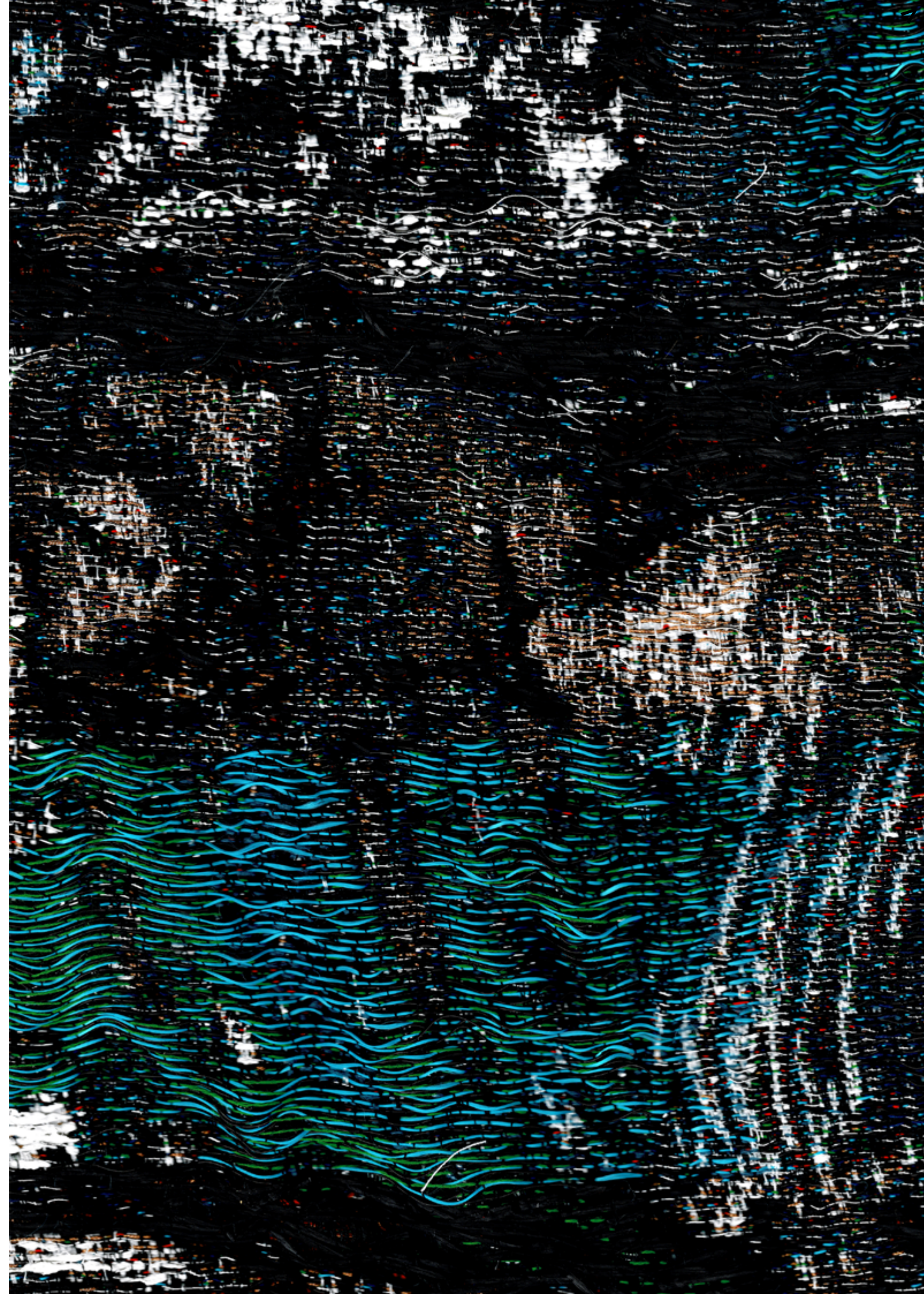
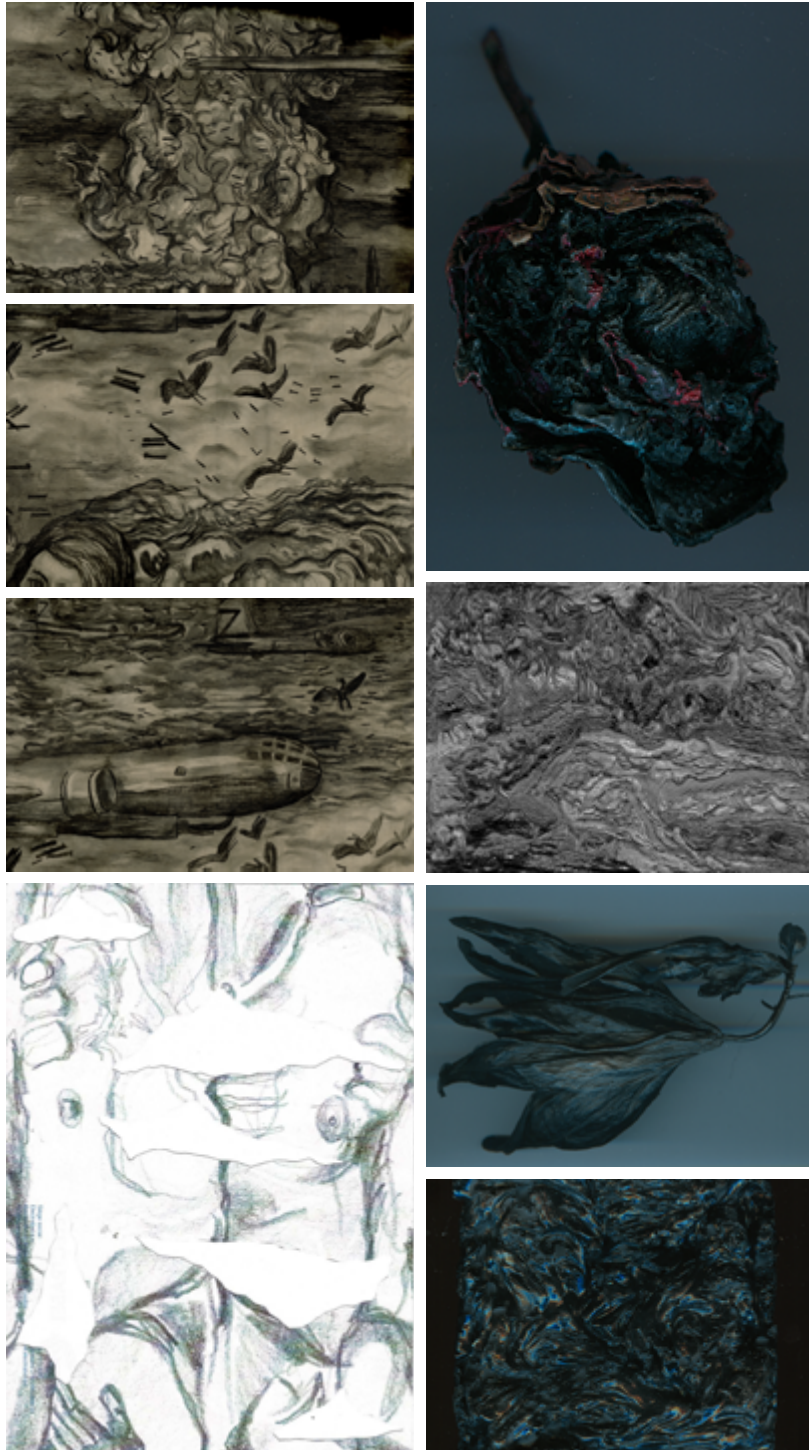
**"SPOMENIK"** 2019 3 editions  
 Dimensions **50x230 cm 100x230 cm**  
**100x230 cm 50x230 cm**  
 Composition **coton cashwool Elirex**  
**mohair polyester polymer raffia wool**

Photography **Sébastien Delahaye**  
 Zaventem **Zaventem Ateliers**

**"FLYING CARPET"** 2019 Unique piece  
 KRJST Studio x Lionel Jadot  
 Dimensions **180H 130W 70D cm**  
 Composition **metal natural**  
**and synthetic fibers wood**











"VOLUPTÉS IMAGINAIRES" Original drawing



**"VOLUPTÉS IMAGINAIRES"** 2021 3 editions  
with unique embroidery Dimensions  
**200x165 cm** Composition **acrylic**  
**cashwool coton Elirex filling yarn linen**  
**merinos wool mohair plastic raffia**

Pieces of textile **Touche—Touche**  
Photography **Sébastien Delahaye**  
Zaventem **Zaventem Ateliers**





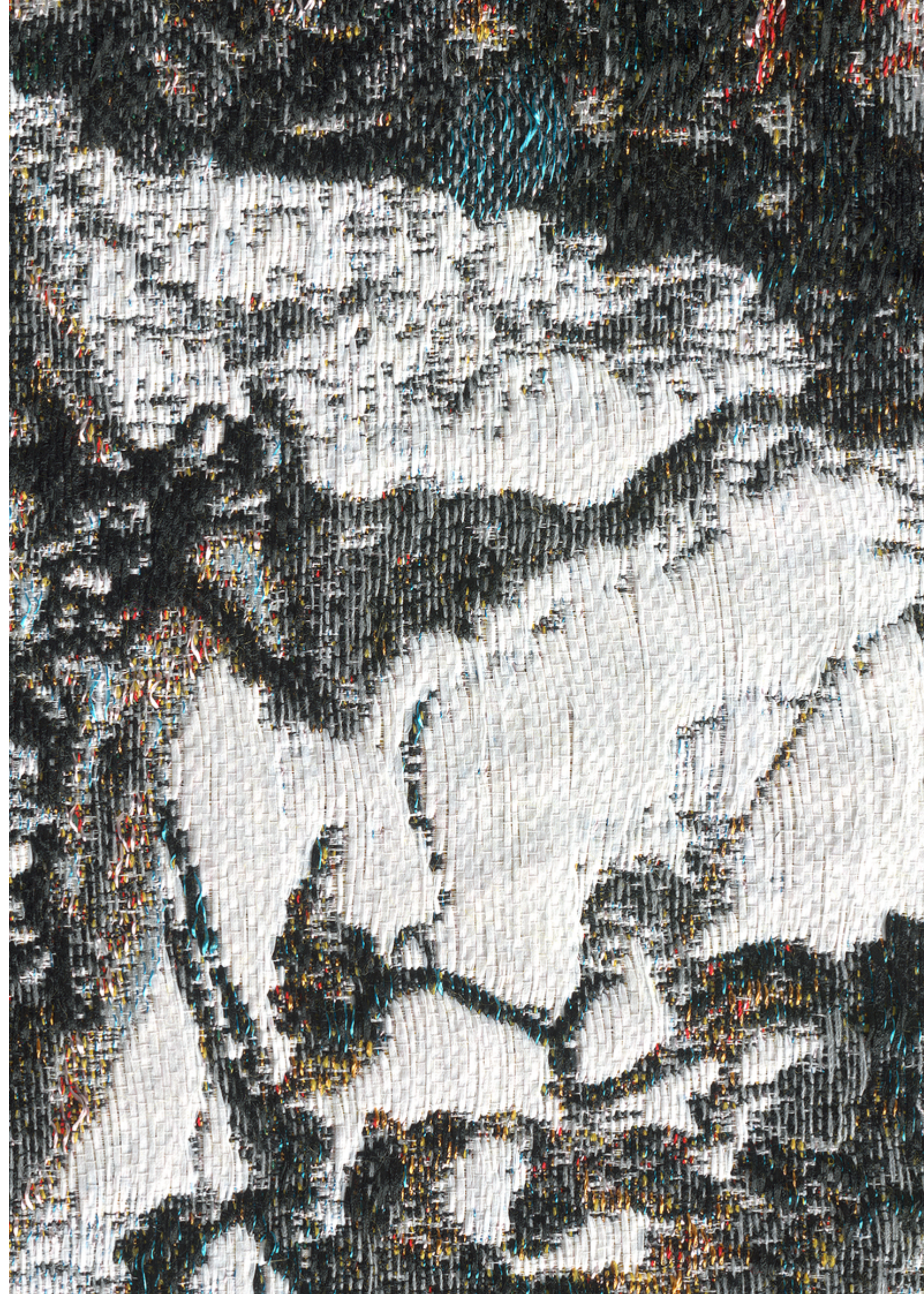
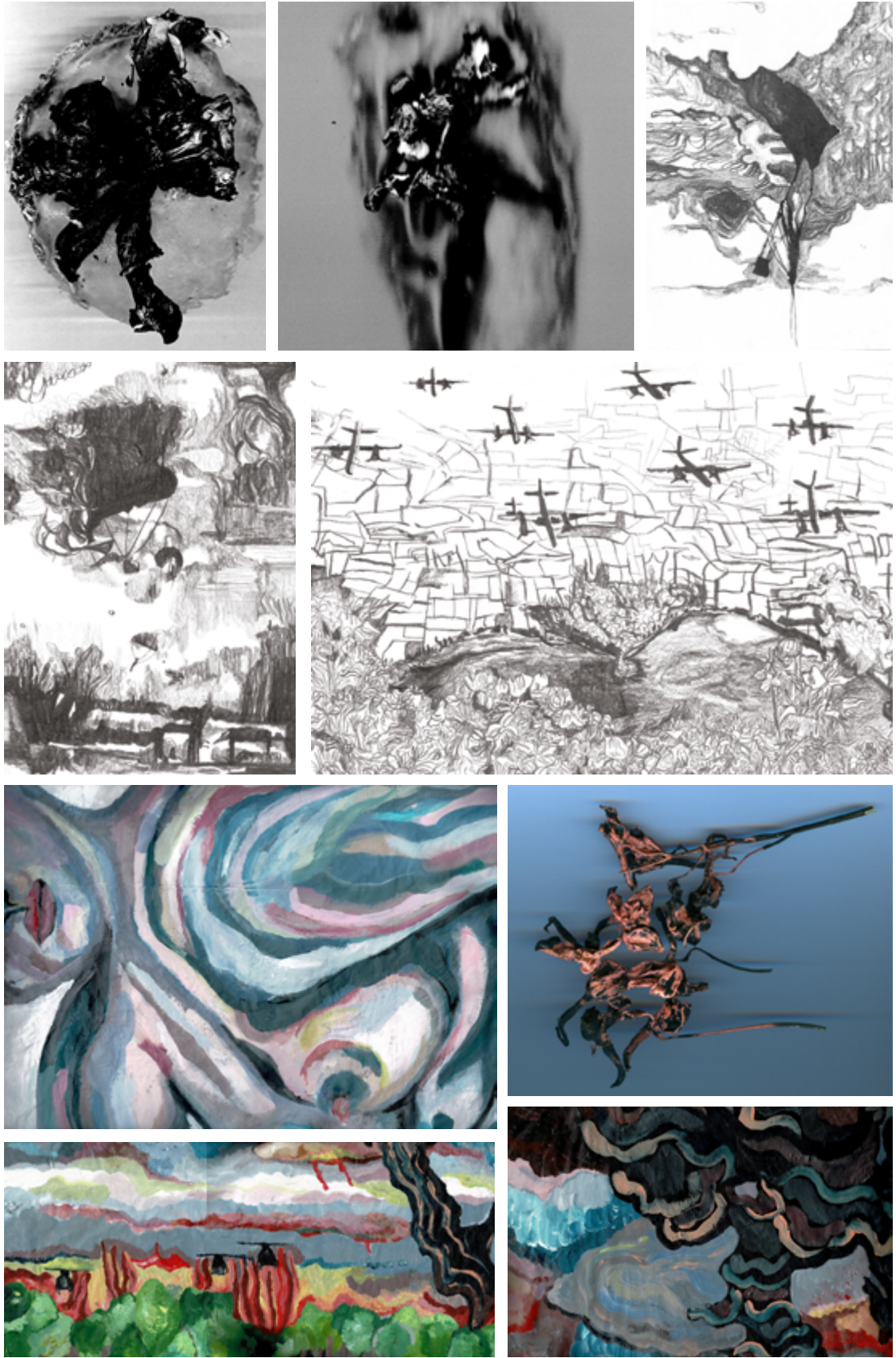




**"LANDSCAPE"** 2018 3 editions  
Dimensions **160x250 cm**  
Composition **acrylic cashwool coton**  
**Elirex mohair paper polyester wool**

Table **Maison Armand Jonckers**  
Photography **Sébastien Delahaye**  
Zaventem **Zaventem Ateliers**









"LANDSCAPE" left Original drawing right Tapestry



# ART WORKS: “FLOREBO QUOCUMQUE FERAR” SERIES

The process of organization is set up as layers, superimpositions of periods, cultures, knowledge, ... that we collect and organize to create a panoramic and yet precise feeling, where we combine words that contradict each other. Scales, infinitely large and infinitely small, are depicted side by side, and are tressed and intertwined, disturbing our notion of spatiality and temporality.

Images have no spatio-temporal limits, they cross borders and persist in our memories. “They are like ghosts for grown-ups.” A. WARBURG

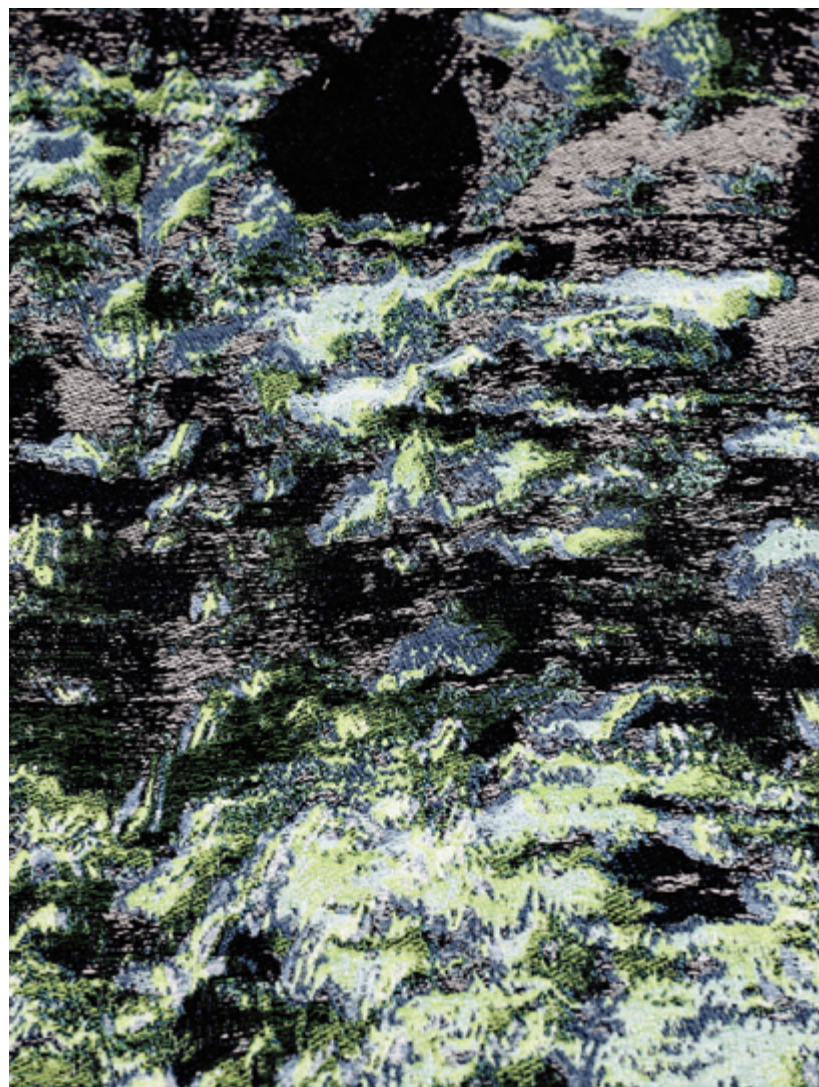




"ORION" 2017 Unique edition  
 Dimensions **165x800 cm**  
 Composition **acrylic cashwool**  
**coton mohair polyester**

Brussels © Villa Empain, fondation Boghossian





**"RECOLLECTION II"** 2016 3 editions  
 Dimensions **165 x 1800 cm**  
 Composition **acrylic cashwool**  
**coton linen mohair**

Brussels © **La Vallée**





**"CEPHEUS"** 2016 3 editions  
 Dimensions **190x165 cm**  
 Composition **acrylic cashwool**  
**coton linen polyester**

Brussels © **Desmet Gallery**





"CEPHEUS" Original drawing

"CEPHEUS" Tapestry



# COMMISSIONED ART WORKS





**HERMÈS STORE LUXEMBOURG**  
2021 interior design

**Photography Sébastien Delahaye**  
Luxembourg © Hermès









**SILVERSQUARE BAILLI, a 7000 m<sup>2</sup>**  
**coworking space** 2020 art direction  
 design interior architecture

**Photography Sébastien Delahaye**  
 Brussels **Silversquare Bailli**











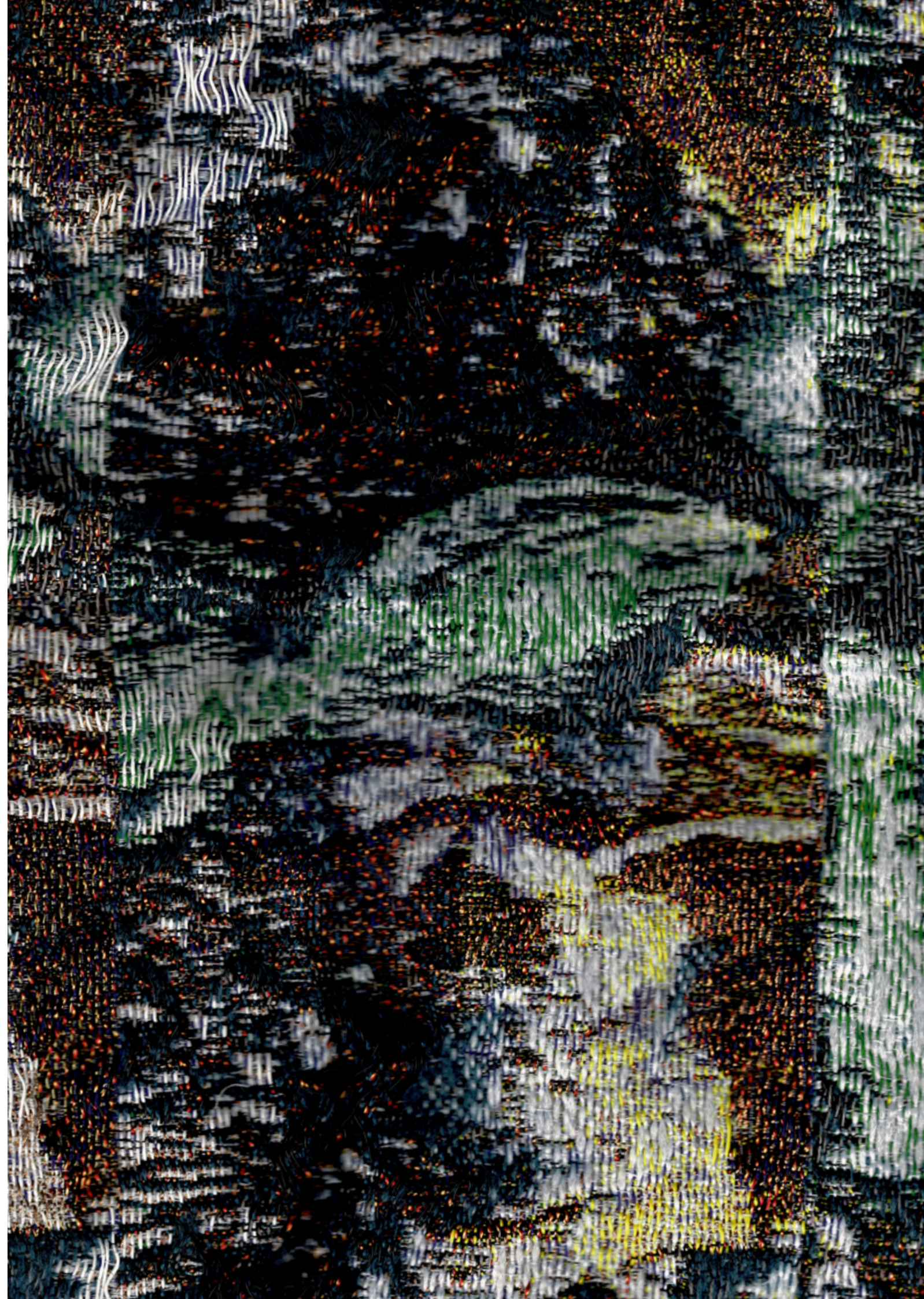








**"ET LUX IN TENEBRIS LUCET"**  
 2019 Unique edition  
 Dimensions **1000x1400 cm**  
 Composition **acrylic cashwool coton**  
**merino wool mohair polyester polymer**





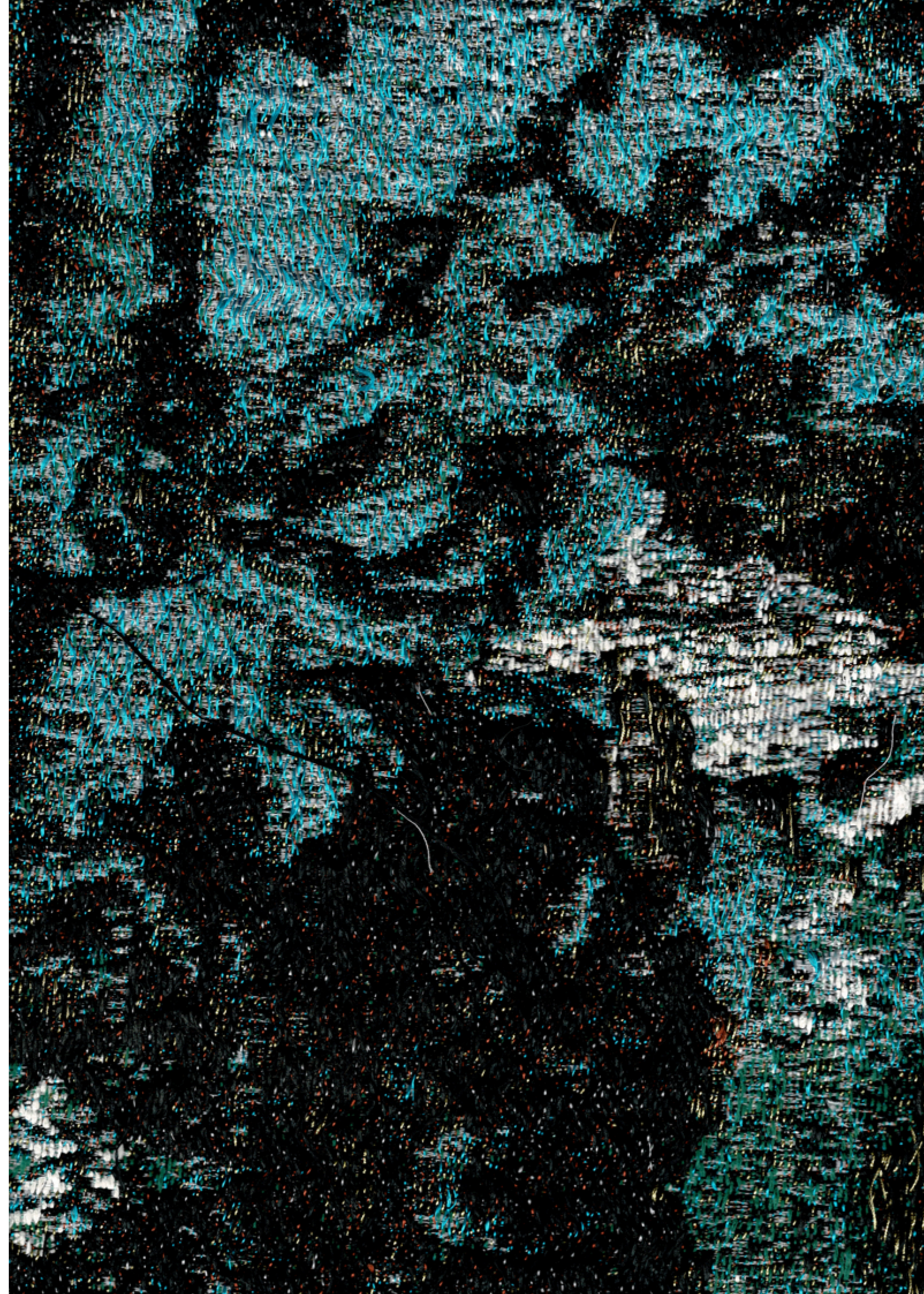
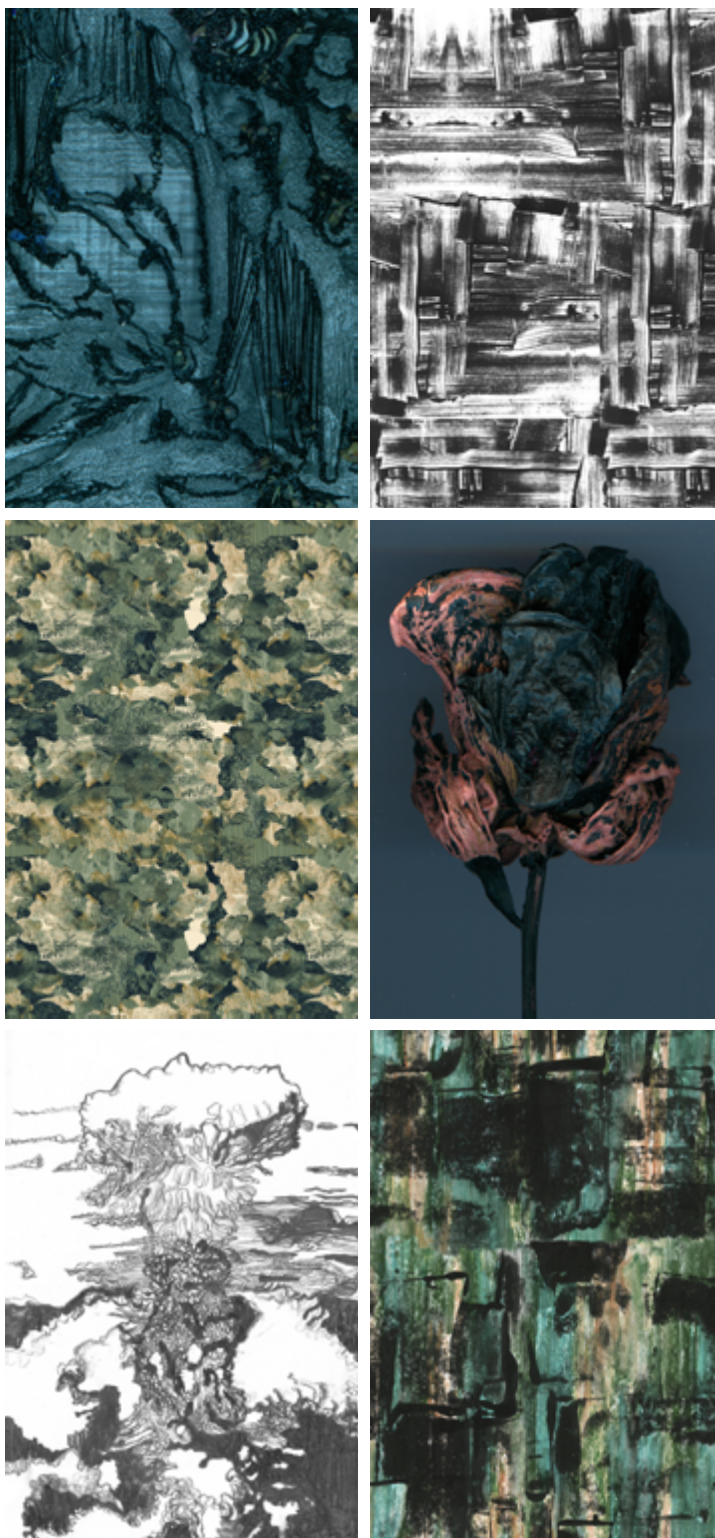


"DREAMSCAPE" Original drawing

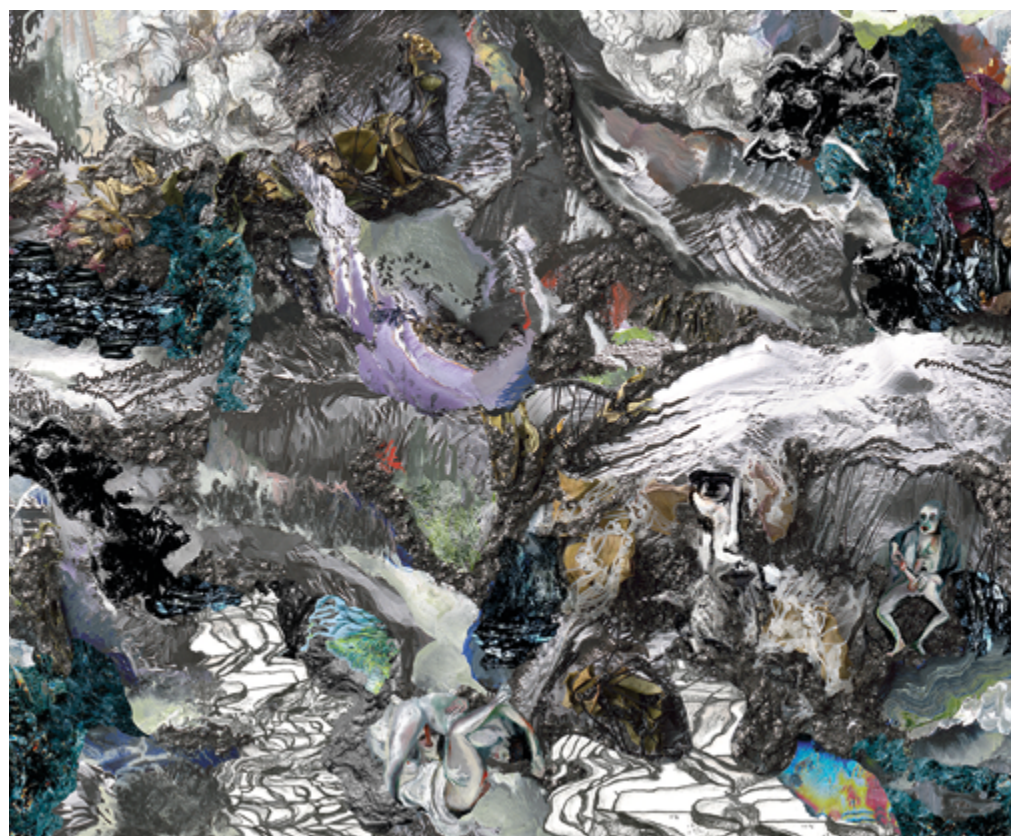


"DREAMSCAPE" 2018 Unique edition  
Dimensions **130x200 cm**  
Composition **acrylic coton Elirex**  
**polyester polymer viscose**









"SHAKKEI" Original drawing



"SHAKKEI" 2019 Unique edition  
Dimensions **200x160 cm**  
Composition **acrylic coton Elirex linen Lurex**  
**merino wool mohair non-woven paper viscose**





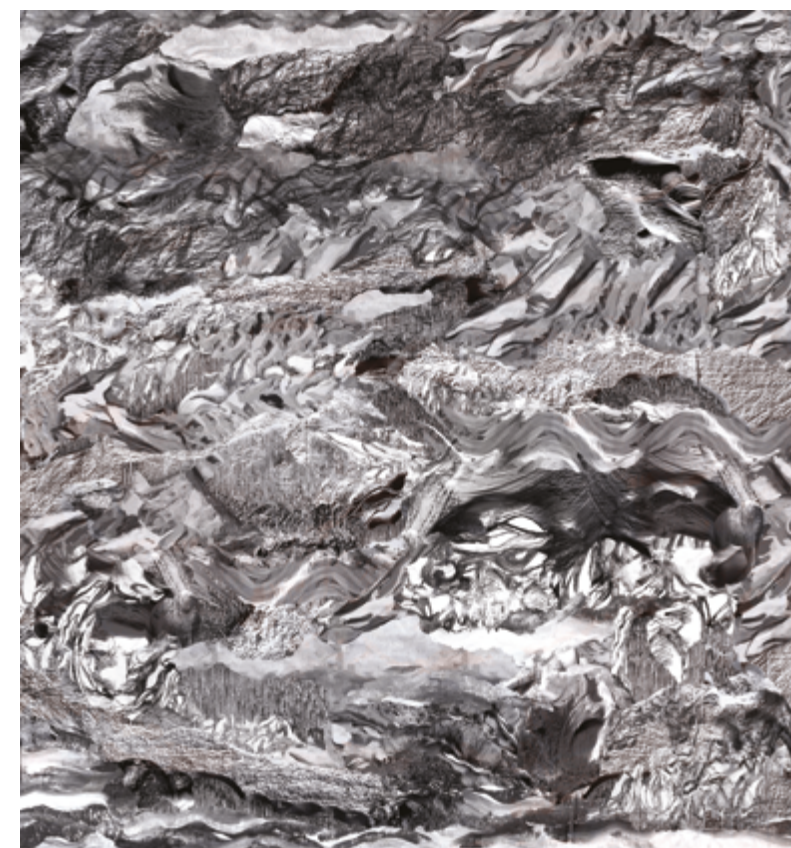
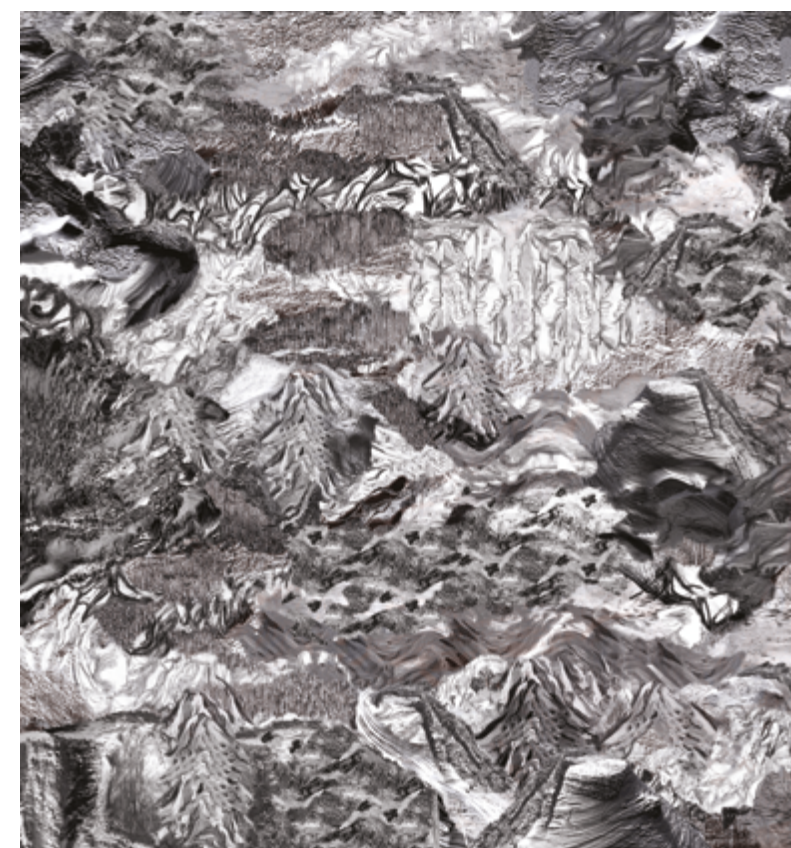
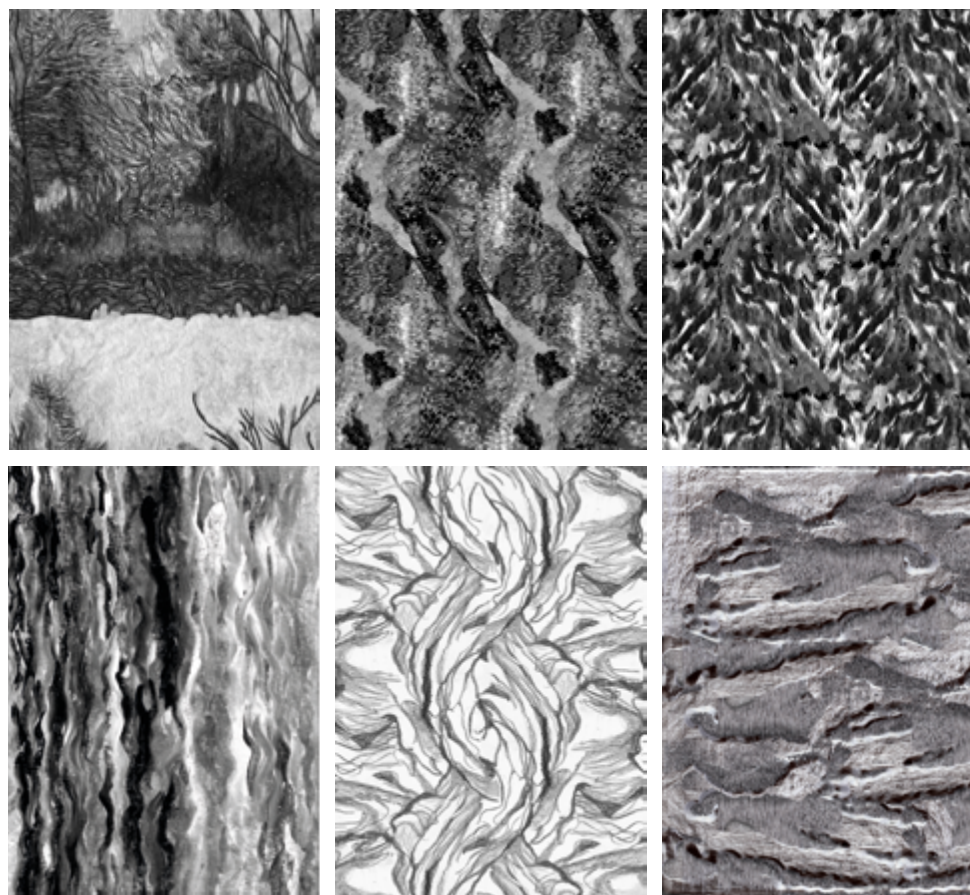




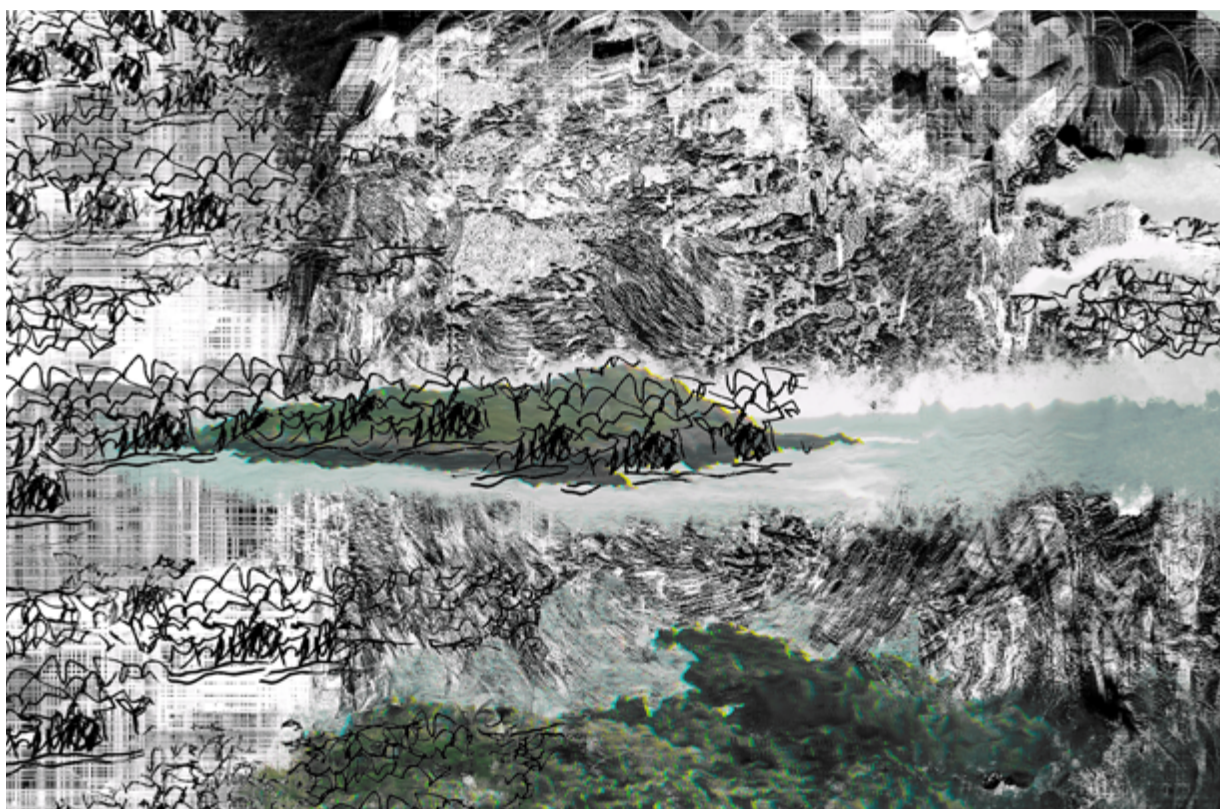
**DIVA MUSEUM 2018** Unique editions  
 Dimensions **300x400 cm** Composition  
**acrylic cashwool coton linen Lurex**  
**merino wool mohair polyester polymer**

Antwerp © **DIVA museum**







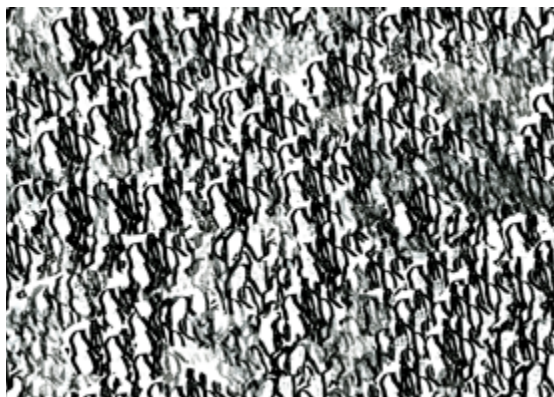


**BOUCHÉRY RESTAURANT** Original drawing (in collaboration with Sébastien Delahaye)



**BOUCHÉRY RESTAURANT** 2017 Unique edition  
 Dimensions **165x60 cm 165x165 cm 165x60 cm**  
 Composition **acrylic coton linen**  
**Lurex merino wool mohair polymer**







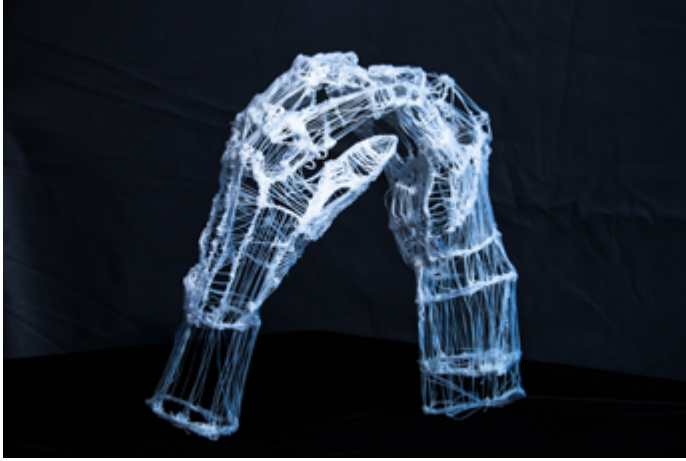


**BELFIUS ART GALLERY 2017**  
Exhibition "**Recollection**"  
tapestries scenography curation

Brussels © **Belfius Art Gallery**











**MAASMECHELEN VILLAGE** 2016  
outdoor tapestries wallpapers scenography

Maasmechelen © **Maasmechelen Village**





PLEASE TOUCH  
!!  
TAKE A  
LUCKY  
YARN  
WITH  
YOU!!

KR JS studio

A NEW WAVE OF  
EXTRAORDINARY



MAASMECHELE  
VILLAGE











